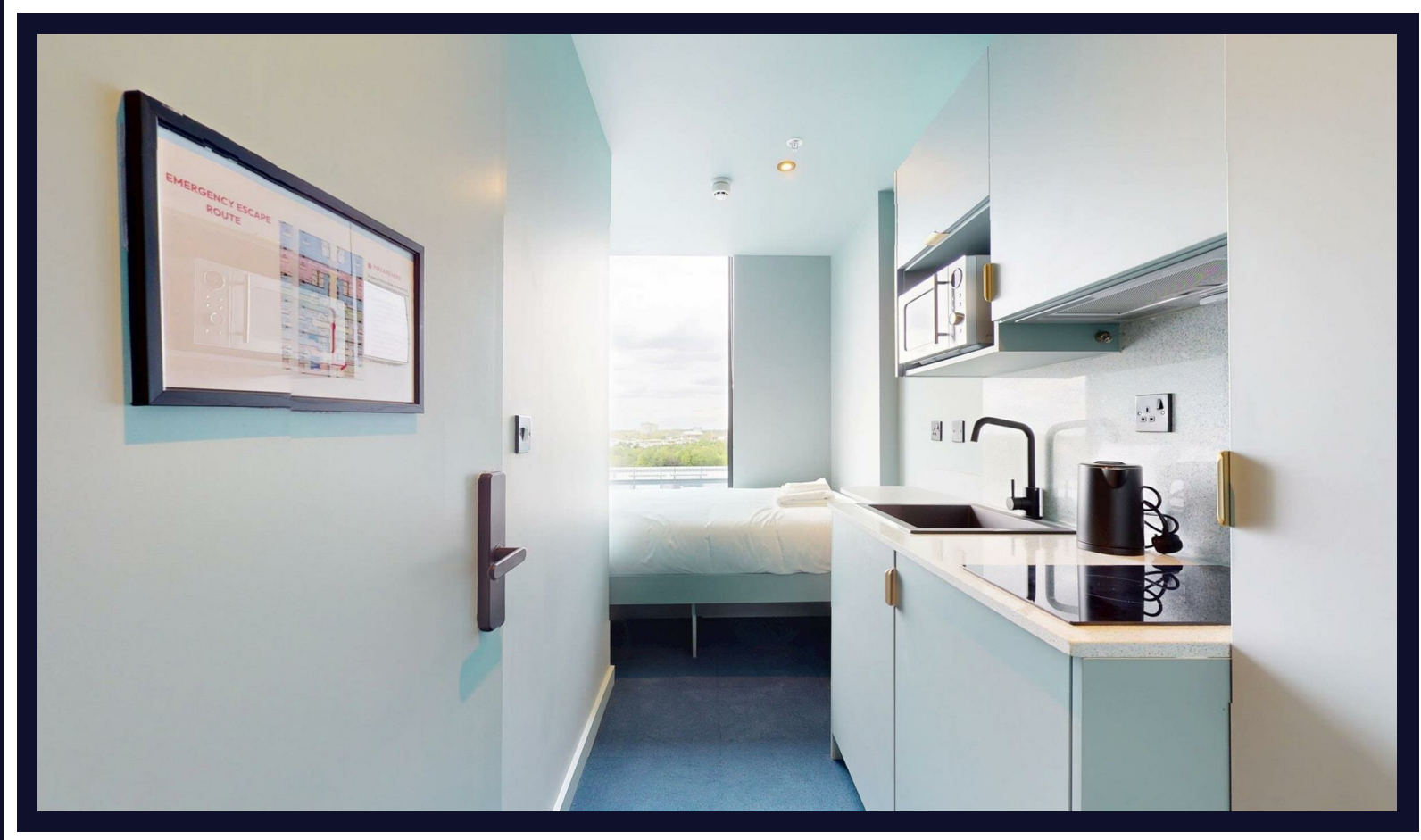


&Soul

Southall • Middlesex • UB4 0JN

PCM: £995 PCM



coopers
est 1986

Modern Studio Rooms from £995pcm

Newly renovated studio rooms ideally located near Southall Station with easy access to Central London via the Elizabeth Line. A complimentary shuttle service to and from the station adds convenience, with local shops and amenities close by.

Residents enjoy top-tier facilities including a communal kitchen and dining area with free daily breakfast, perfect for socialising. For remote workers, the co-working space features acoustic carpets, private phone booths, computers, and meeting rooms to support productivity.

Health and wellness are a priority with an on-site gym, yoga and movement studio, and meditation pod. Creative amenities include music recording,

Newly Renovated Studio Rooms

Starting from £995pcm

0.9 Miles from Southall Station

Communal Kitchen, Dining Room, Free Breakfast

Gym, Yoga, Movement Studio and Meditation Pod

Fully equipped Co Working Spaces

On-site Cafe and Vending Machines

Local Amenities Nearby

Games Room with Ping Pong, Pool and More

Shuttle Bus Service to Station

Available Date

17th May 2025



coopers
est 1986

01895 257 566

1 Vine Street, Uxbridge,
Middlesex, UB8 1QE

propertymanagement@coopersresidential.co.uk

CoopersResidential.co.uk

Energy Efficiency Rating		Current	Potential
Very energy efficient - lower running costs			
A	92-100		
B	81-91		
C	69-80		
D	55-68		
E	41-54		
F	27-40		
G	1-26		
Not energy efficient - higher running costs			
EU Directive 2002/91/EC			
England & Wales			

Environmental Impact (CO ₂) Rating		Current	Potential
Very environmentally friendly - lower CO ₂ emissions			
A	21-23		
B	18-20		
C	15-17		
D	12-14		
E	9-11		
F	6-8		
G	3-5		
Not environmentally friendly - higher CO ₂ emissions			
EU Directive 2002/91/EC			
England & Wales			

Important Notice: These particulars, whilst believed to be accurate are set out as a general outline only for guidance and do not constitute any part of an offer or contract. Intending purchasers should not rely on them as statements or representation of fact, but must satisfy themselves by inspection or otherwise has the authority to make or give any representation or warranty in respect of the property.